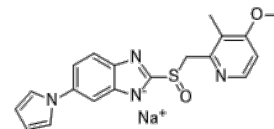


**Product Name** : Ilaprazole sodium  
**Cat. No.** : PC-24747  
**CAS No.** : 172152-50-0  
**Molecular Formula** : C<sub>19</sub>H<sub>17</sub>N<sub>4</sub>NaO<sub>2</sub>S  
**Molecular Weight** : 388.42  
**Target** : Proton Pump  
**Solubility** : 10 mM in DMSO



### Biological Activity

Ilaprazole sodium (IY-81149) is a potent, orally active proton pump inhibitor that irreversibly inhibits H<sup>+</sup>/K<sup>+</sup>-ATPase with IC<sub>50</sub> of 6 μM.

Ilaprazole dose-dependently increases gastric pH in anesthetized rats, exhibits superior potency against gastric acid secretion compared with omeprazole.

### References

Kim EJ, et al. Arzneimittelforschung. 2001 Jan;51(1):51-9.

Kwon D, et al. Arzneimittelforschung. 2001;51(3):204-13.

Seo KA, et al. Xenobiotica. 2012 Mar;42(3):278-84.

**Caution: Product has not been fully validated for medical applications. Lab Use Only!**

E-mail: tech@probechem.com